



# Frost – Defrost Cabinet

*CRHEL series*



# The innovation as an attitude

## *The company*

**Ineltec** is a company with more than 20 years of experience in the sector and 5.000 equipment installed all around the world. Our achievements are due to the ability of offering tailored solutions to perform any kind of test.

*“Technology, research and innovation are the basis for creating equipment of high reliability.”*



# Model

Frost-Defrost Cabinet from  
CRHEL series



Frost-defrost cabinets of the  
CRHEL series have different volumes.

# Model

Frost-Defrost Cabinet  
Series CRHEL / INELTEC

## Equipment description

**Frost-Defrost cabinets from the CRHEL Series** simulates automated cycles of Frost and Defrost according to the international standards.

The maximum temperature ranges are from  $-30^{\circ}\text{C}$  to  $+50^{\circ}\text{C}$ .

We also design tailored equipment according to the specifications.

By that way we modify or amplify the standard features.

Frost-Defrost cabinets are used Mainly in the construction sector, companies such as tiles manufacturers, slate, marble, bricks, etc.

## Volumes

01 325 liters

02 525 liters

01



02



# Sectors



Construction,  
Luminary,  
Wood,  
Cork,  
Glass,  
Coating,  
Wiring,  
Ceramics



R+D,  
Technological  
centers,  
Universities,  
Laboratories

# Standards

**UNE-EN 10545-12:1997**

**UNE 67028 EX**

**UNE-EN 539-2:2013**

**UNE-EN 1343:2013**

**UNE-EN 12326-2:2012**

**UNE 438-2:2005**

**UNE-EN 1341:2013**

**UNE EN 1348:1997**

**UNE-EN 12371:2011**

**UNE-EN 491:2012**

**UNE-EN 1342:2013**

**UNE-EN 1367-1:2008.**

**UNE 67048:1988**

**UNE-EN 494:2013**

**Etc.**

# Features of the equipment

## construction



01

01/ Interior - Exterior

The interior is made of stainless steel and the exterior made of aluminum sheet lacquered in white.



02

02/ Sample holder

Sample Holder element to put 12 trays, with a separation between them over 50mm.



03

03/ Thermal tank

It is installed a thermal tank. Inside of it, it is set a condenser unit, the exchanger plates, the circulation pump, an electrical and power control box, water tank, cooling unit, heating system, etc.



04

04/ Furniture base

Legs adjustable in height.  
The cabinet has 4 legs and the tank 6 legs.



05

05/ Control system

The touch screen PC comes with a control software that is simple and intuitive and allows the programming, acquisition, recording and controlling of all the variables.

# Features of the equipment

## Functional properties

CRHEL Model	Temperature	Gradients				Dimensions HxWxD (mm)	Approx. weight
		Air		Water			
Vol. Liters	-30°C	Cooling	Heating	Cooling	Heating	Interior	Kg.
	+50°C	1,5°C min	2°C min	30°C hour	-		
325	*	*	*	*	*	750x700x600	650
525	*	*	*	*	*	750x1000x700	800

## In all volumes

### Accuracy

Temp.  $\pm 0,1^{\circ}\text{C}$  max.

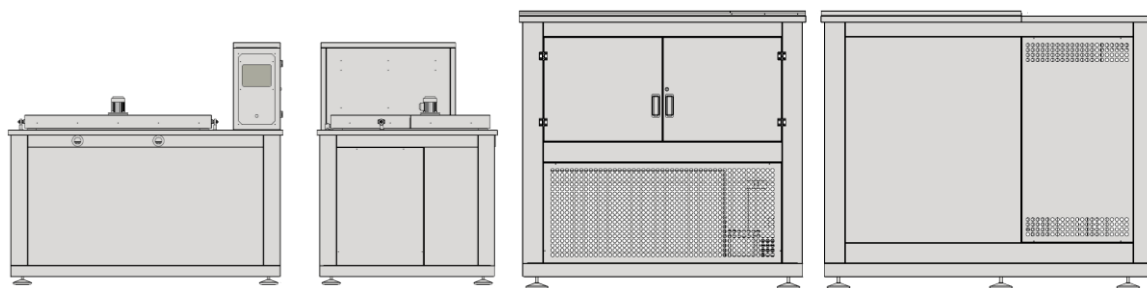
### Homogeneity

Temp.  $\pm 0,5^{\circ}\text{C}$  max.

Other features on request

# Features of the equipment

## External dimensions



\*Approximated dimensions

Volume	Height (mm)	Width (mm)	Depth (mm)	
325	Cabinet	1200	1200	1000
	Tank	-	-	-
525	Cabinet	1200	2000	1300
	Tank	1500	2000	1700

## Electrical consumption and noise level

CRHEL Model	Voltage supply and power	Maximum consumed power	Heat Power	Noise level	
Vol. Liters	400V III+GND	Kw	Kw	<65	
	50 Hz			dB	
325	Arcón	*	7	6,5	*
	Depósito	*	4	3,5	*
525	Arcón	*	8	7,5	*
	Depósito	*	5	4,5	*



# Control system

*Touch screen PC*



## Features

- |    |                  |    |             |
|----|------------------|----|-------------|
| 01 | USB              | 06 | RS 232 Com. |
| 02 | Ethernet         | 07 | PS/2        |
| 03 | Wi-Fi (optional) |    |             |
| 04 | CF Socket        |    |             |
| 05 | VGA Com.         |    |             |

*software/  
use*

*With the **PROCAM-WIN** integrated software, it is possible to perform the programming, acquisition, recording, control and analysis of the results.*

*software/  
features*

- 1/ Possibility of automatic or manual programming
- 2/ Start programming in a specific day and hour.
- 3/ It allows taking/ entering notes during the tests
- 4/ Different access levels
- 5/ Maximum 11 operators
- 6/ More than 100 programs
- 7/ Maximum 100 segments per program
- 8/ Linking up to 4 programs
- 9/ 1 to 999999 or infinite programming cycles
- 10/ Visualization and record of the tests in a graphic or table
- 11/ Option to export to Excel or similar
- 12/ Controlling from distance through Ethernet, WIFI and WEB

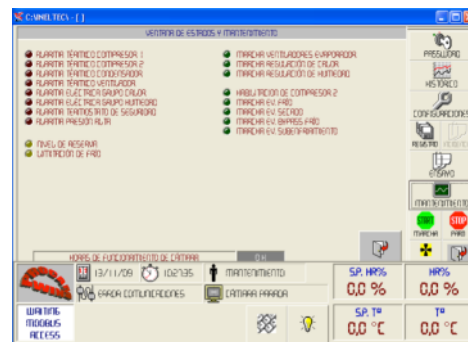
# Control system

software/  
screens

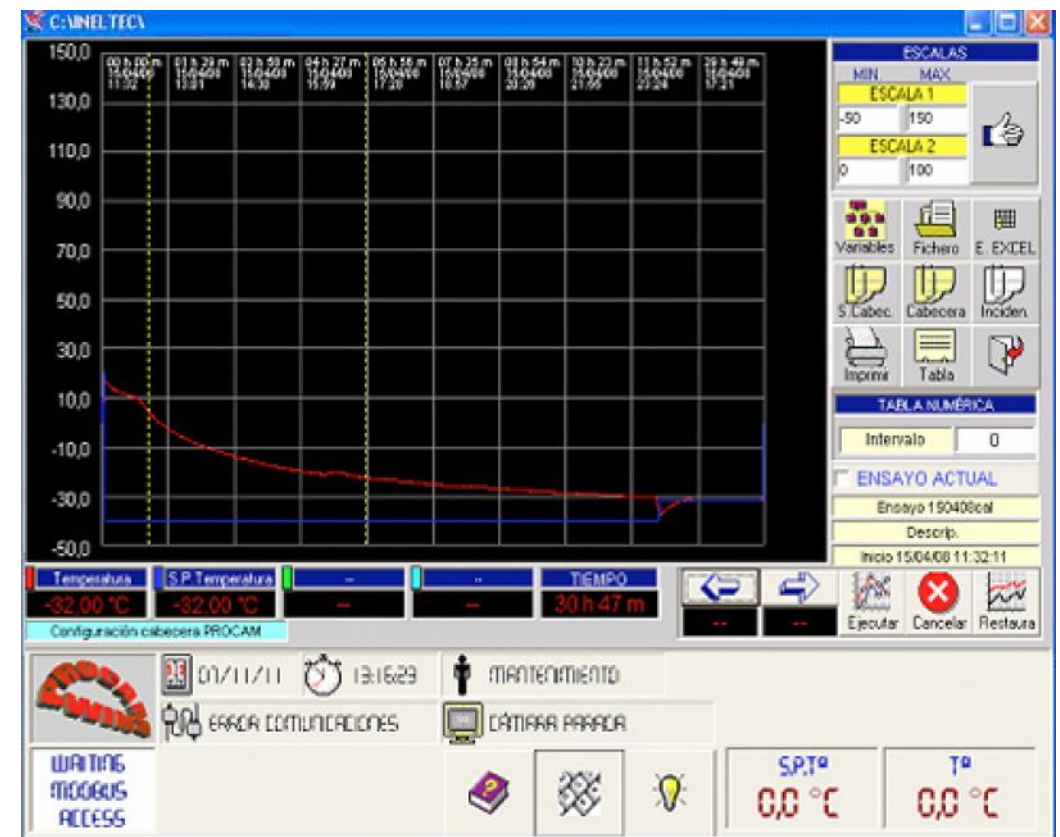
## Operators



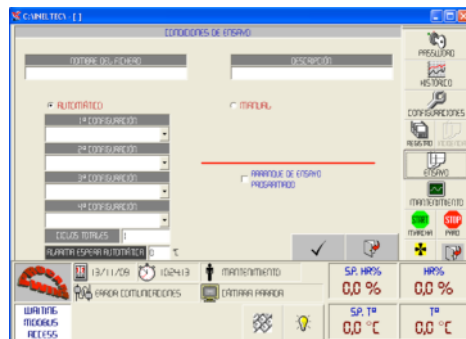
## Maintenance screen



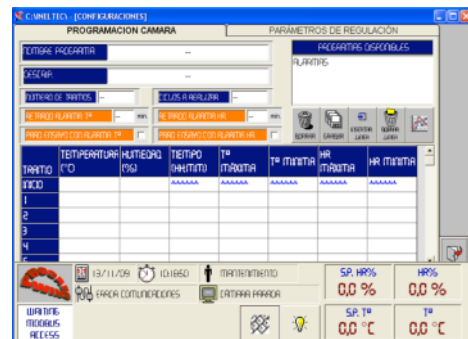
## Software Procam-Win / graphics



## Testing Conditions



## Programming of the chamber



# International presence



# Range of products

Frost-Defrost Cabinet  
Series CRHEL / INELTEC

## ES Simulation equipment



Climatic chambers



Modular chambers



Thermal shock



Combined tests



Specials



Stability



Generator groups



Calorimetric



Corrosion - combined



Corrosion



Frost / Defrost



Tightness – rain



Tightness – air/wind



Freezer cabinet



Thermostatic bath



Furnace



Heating

# Range of products

Frost-Defrost Cabinet  
Series CRHEL / INELTEC

## BE Testing bench



Fatigue endurance



Characterization



Pulsing pressure



Rupture



Bursting



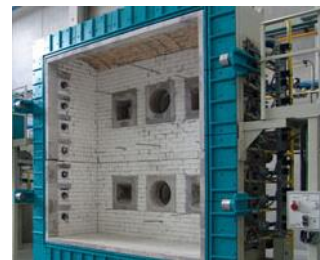
Liquid Thermal Shock



Standardization



Resistance to the fire - I



Resistance to the fire - II



Reaction to the fire - I



Reaction to the fire - II

## MC Measurement and control



Artificial vision - I



Artificial vision - II



Artificial vision - III



End of line control - I



End of line control - II



**Ineltec**  
Spain / Barcelona  
Headquarters



C/ Metal·lúrgia, 8  
Pol. Ind. Les Goules  
08551 Tona



T/ 0034 938 605 100  
F/ 0034 938 717 463



[ineltec@ineltec.es](mailto:ineltec@ineltec.es)  
[www.ineltec.es](http://www.ineltec.es)

**Follow us**  
on our  
social networks



[twitter](#)



[Blog](#)